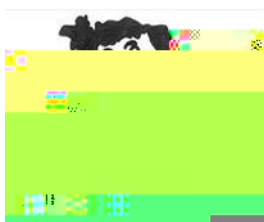




Early Learning and Childcare: Information for Parents



ELC Settings

There are a range of ELC settings across Argyll & Bute. As well as local authority managed nurseries, we work in partnership with a number of childminders and providers in the private, voluntary & independent sectors to increase the choice of high quality ELC options available to parents.

51 local authority settings based in primary schools, including 5 offering Gaelic provision.

4 standalone local authority settings

1 local authority outdoor nursery

21 partner provider settings, including 3 outdoor nurseries

20 partner childminders for eligible 2 year olds

16 partner childminders for eligible 3 and 4 year olds

All settings we work in partnership with meet the essential criteria as detailed in *A Blueprint for 2020 Funding Follows the Child and the National Standards for ELC Providers: Principles and Practice*:

<https://www.gov.scot/publications/funding-follows-child-national-standard-early-learning-childcare-providers-principles-practice/pages/2>

A full list of ELC settings can be found at: <https://www.argyll-bute.gov.uk/education-and-learning/early-learning-and-childcare/childcare-providers>

Where possible we have included details of hours and days that each ELC setting offers funded ELC, to allow you to find the best setting to meet your needs.



Eligibility

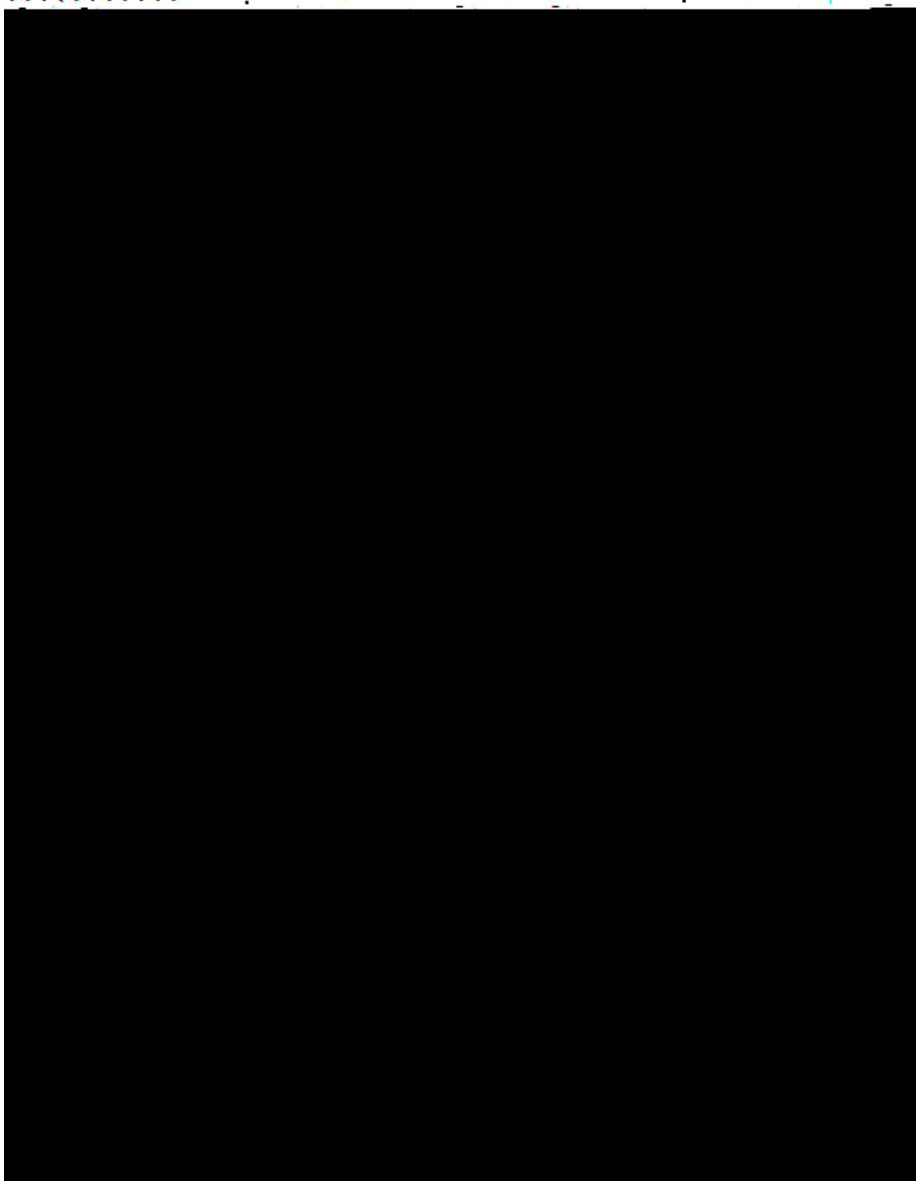
Changing your ELC placement

Application Pro

Frequently Asked Questions

Appendix 1: ELC Spaces Allocation

ELC Spaces Allocation



Appendix 2: New Application Admission Priorities

The below details how new applications for ELC are categorised:

- Priorities 1-4 apply to applications at the first choice ELC setting.
- Priorities 1-5 apply only to complete ELC applications that are received during

